



SOUNDINGS			
Sounding No.	Ground Elev.	Driven to Elev.	Remarks
1	98.64	98.98	Through a mixture of sand and gravel.
2	98.54	91.00	Through sandy clay to refusal.
3	97.0	91.00	" " " " " "
4	96.7	92.00	Red penetrated 1/2" per blow for 4.6' to refusal.
5	96.7	92.00	" " " " " "

Hole No.	Ground Elev.	Remarks on Borings
6	97.9	To 3' clay & gravel, very dry & compact.
7	98.4	To 3' gray sandy clay, less compact.
8	97.1	To 3' sandy filler hard pan, very compact.
9	97.1	To 3' very firm hard pan.
10	97.5	To 2.75' sandy clay very compact.
11	98.5	To 2.5' same as above but more moisture.
12	97.5	Same as hole no. 10. At 6.2' struck boulder or possibly ledge.

Curve Data, Cons. Line

Δ = 50° 06' 30"  
D = 6  
T = 446.60'  
L = 835.10'

Equation  
Final Sta 421 + 80.05 equals  
Original Sta 422 + 22.87  
Eq = -42.82'

Final Sta 421 + 80.05 equals  
Original Sta 422 + 22.87  
Eq = -42.82'

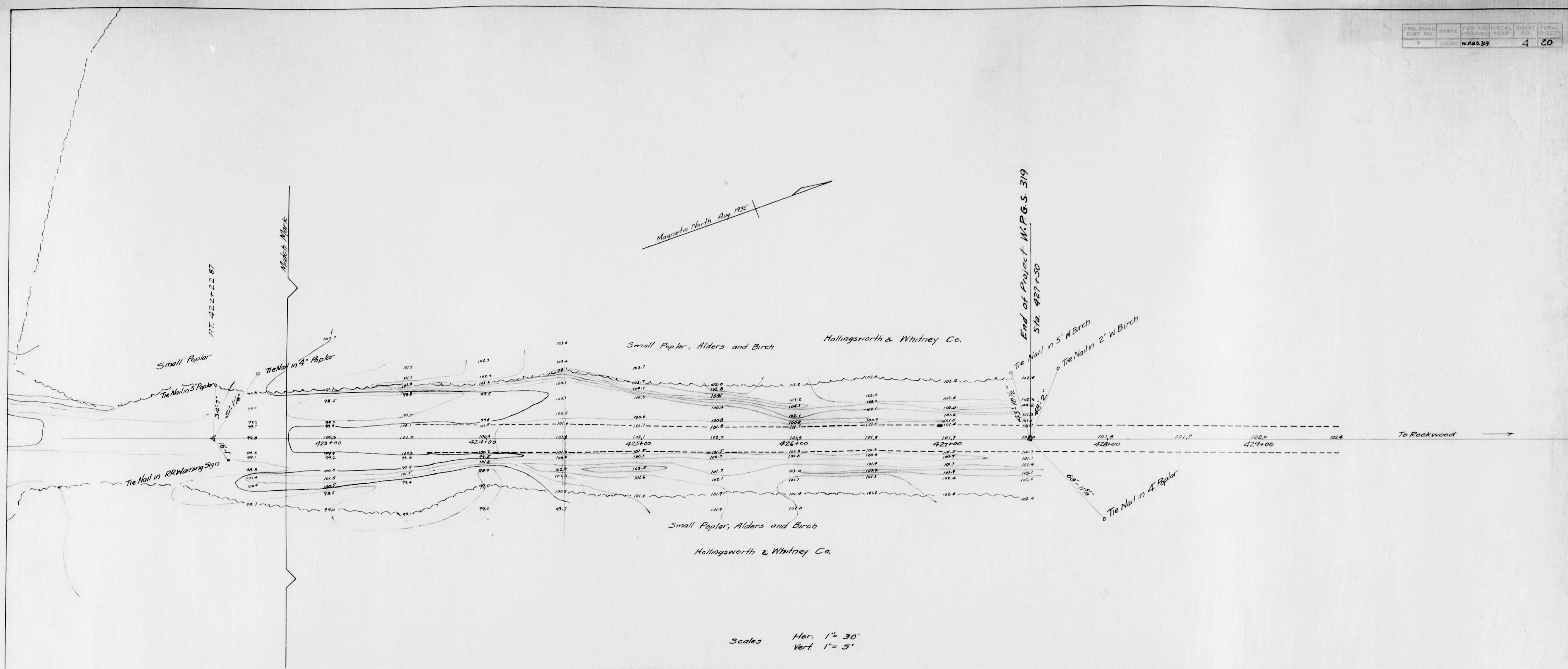
800' VC Ex = 120

STATE HIGHWAY COMMISSION  
BRIDGE DIVISION  
RAILROAD CROSSING  
OVER THE TRACKS OF THE  
CANADIAN PACIFIC RAILWAY  
IN THE TOWNSHIP OF  
SAPLING  
SOMERSET COUNTY  
SURVEY PLAN  
Sept. 1935  
AUGUSTA, MAINE

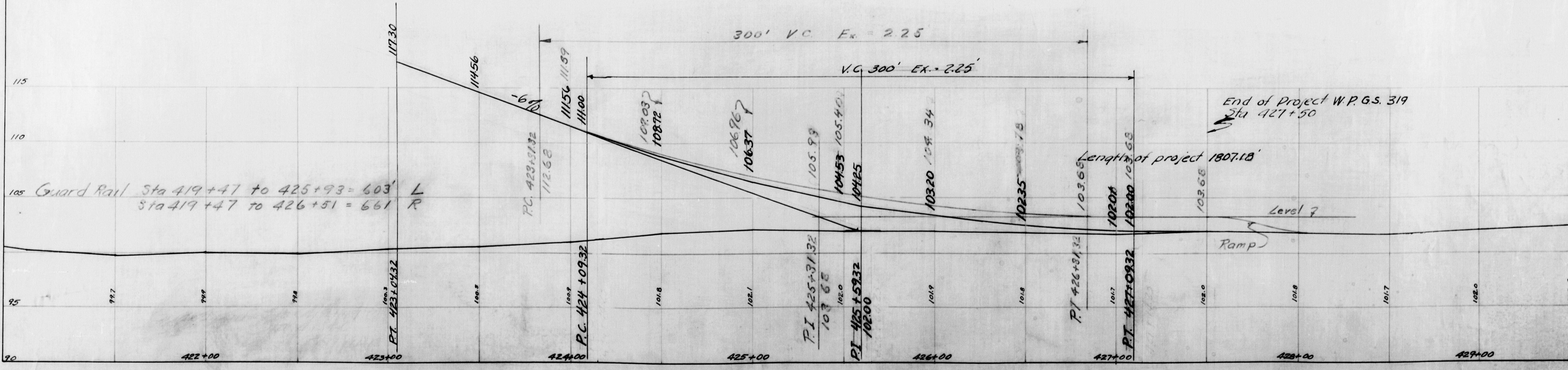
28-209

0 1 2 3 4 5 INCHES





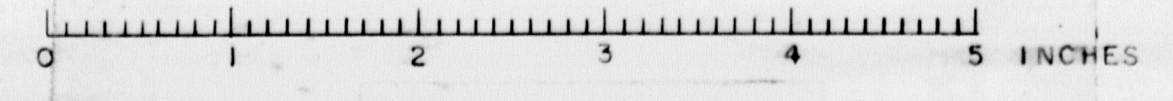
Scales Hor. 1" = 30'  
Vert. 1" = 5'



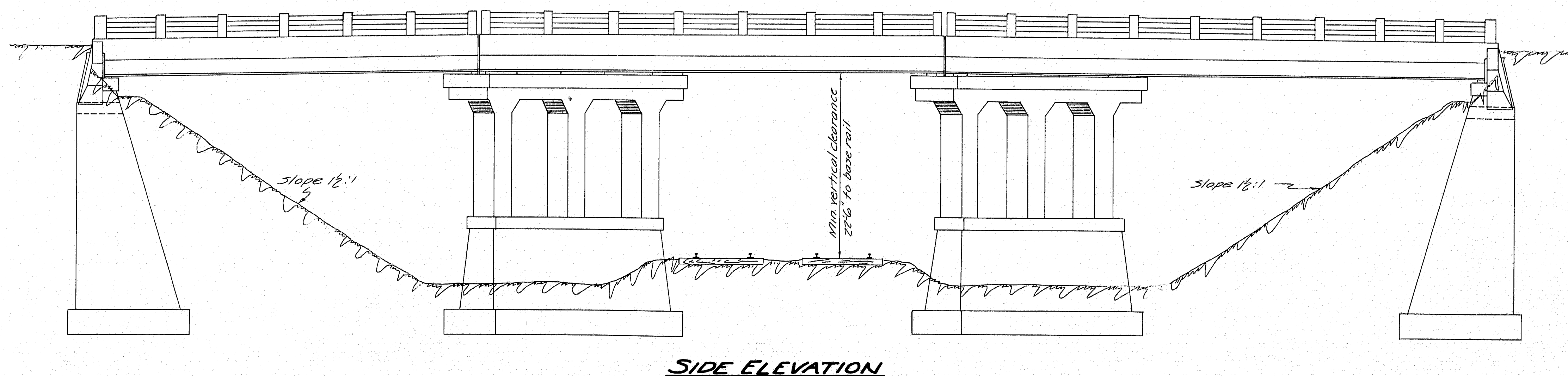
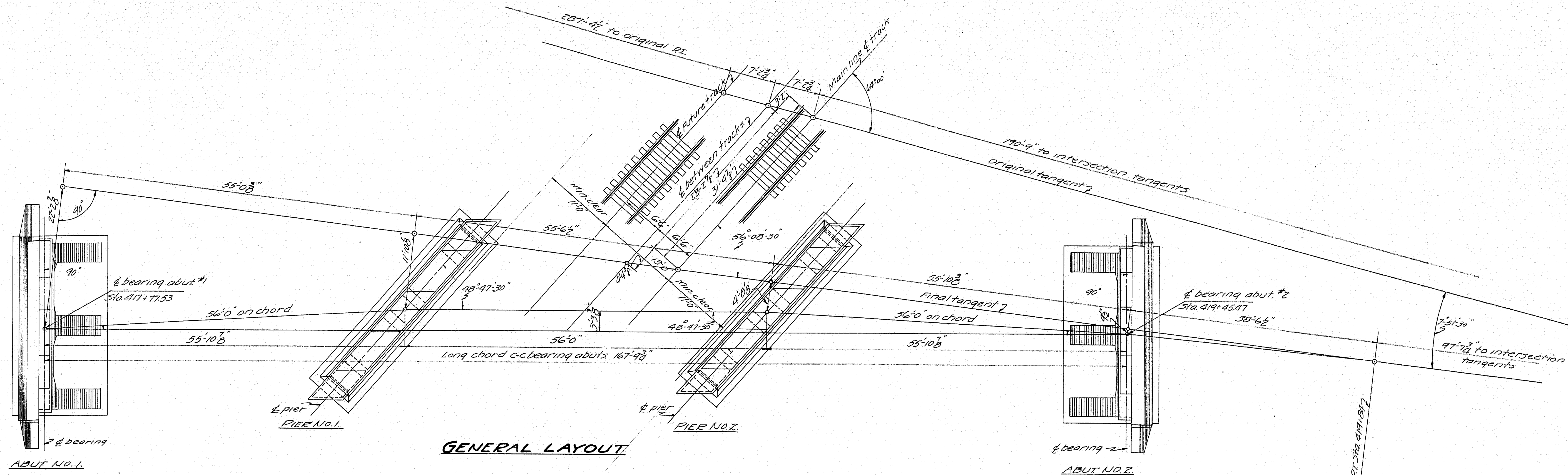
Survey by A.D. MacDonald  
Plotted by S.S. Mitchell  
Traced by S.S. Mitchell

TOWN 13-51  
BRIDGE 3256

STATE HIGHWAY COMMISSION  
BRIDGE DIVISION  
RAILROAD CROSSING  
OVER THE TRACKS OF THE  
CANADIAN PACIFIC RAILWAY  
IN THE TOWNSHIP OF  
SAPLING  
SOMERSET COUNTY  
SURVEY PLAN  
Sheet 4 of 20 Sheets Sept. 1935  
AUGUSTA, MAINE.







U.S. WORKS PROGRAM GRADE TOWN 13-51  
 CROSSING PROJECT No. WRS.319 BRIDGE 3256

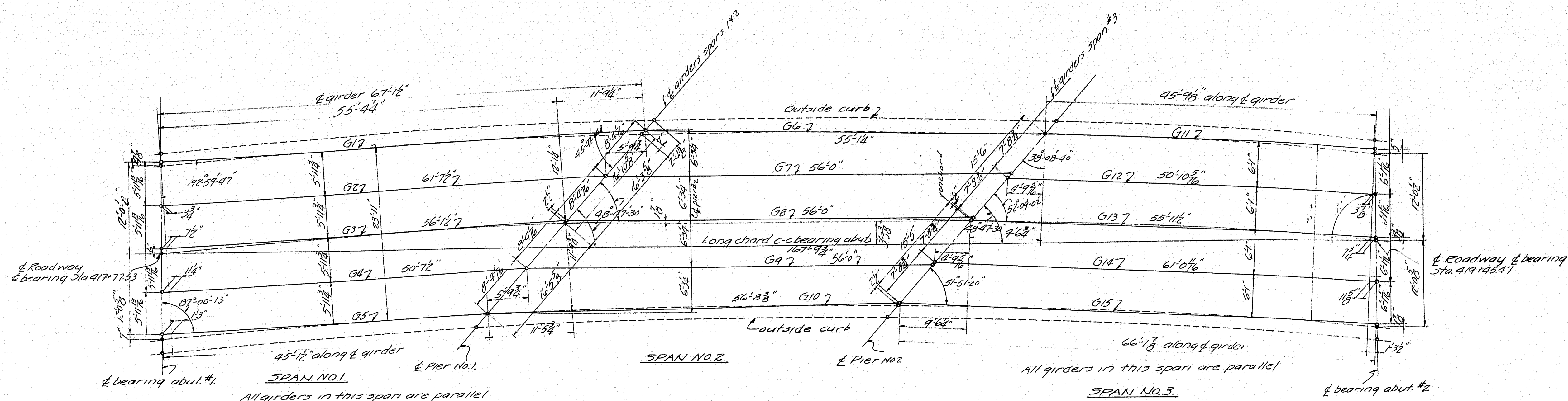
STATE HIGHWAY COMMISSION  
 BRIDGE DIVISION

**RAILROAD CROSSING**  
 OVER THE TRACKS OF THE  
**CANADIAN PACIFIC RAILWAY**  
 IN THE TOWNSHIP OF  
**SAPLING**  
**SOMERSET COUNTY**  
**GENERAL LAYOUT**

SHEET 9 OF 20 SHEETS AUGUSTA ME. MAR. 1936.

28-215





U.S. WORKS PROGRAM GRADE TOWN 13-51  
CROSSING PROJECT NO. WPG. 3.319 BRIDGE 3256

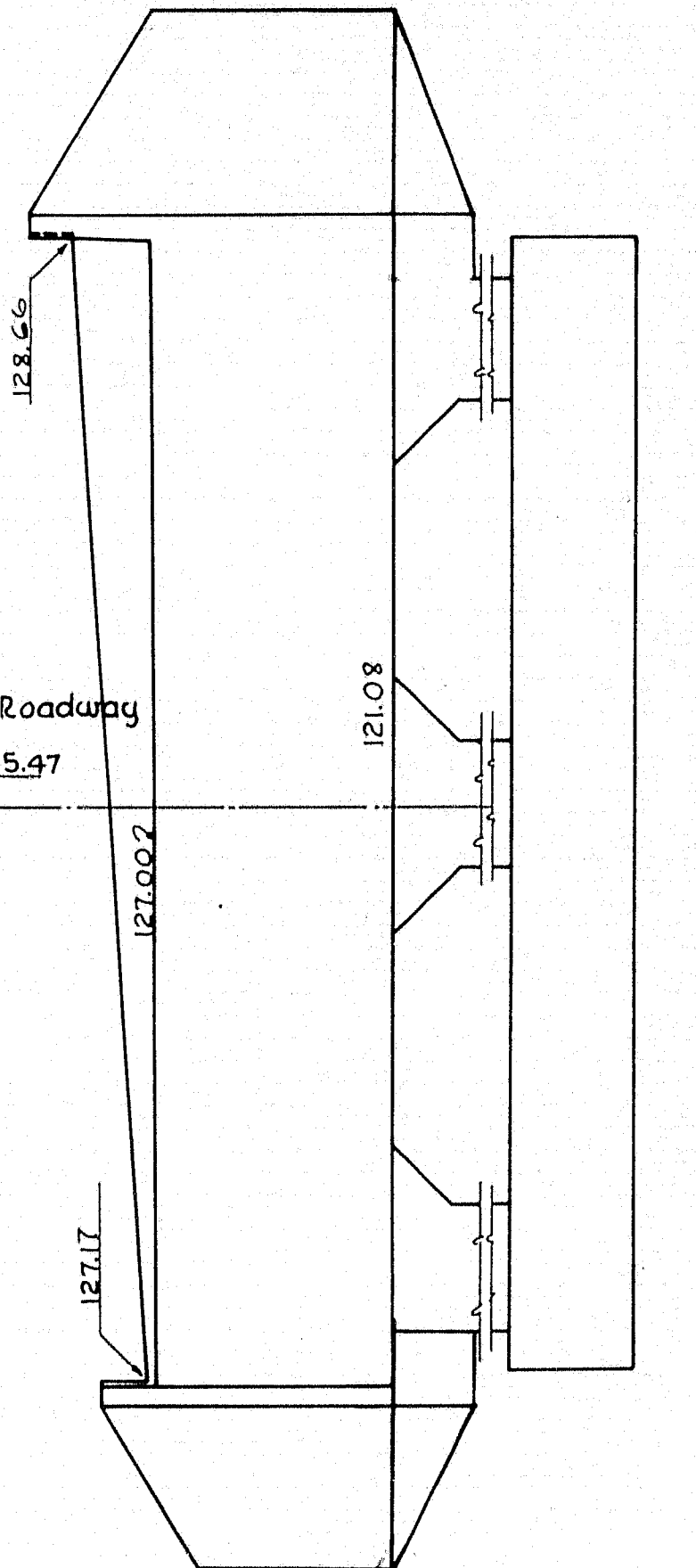
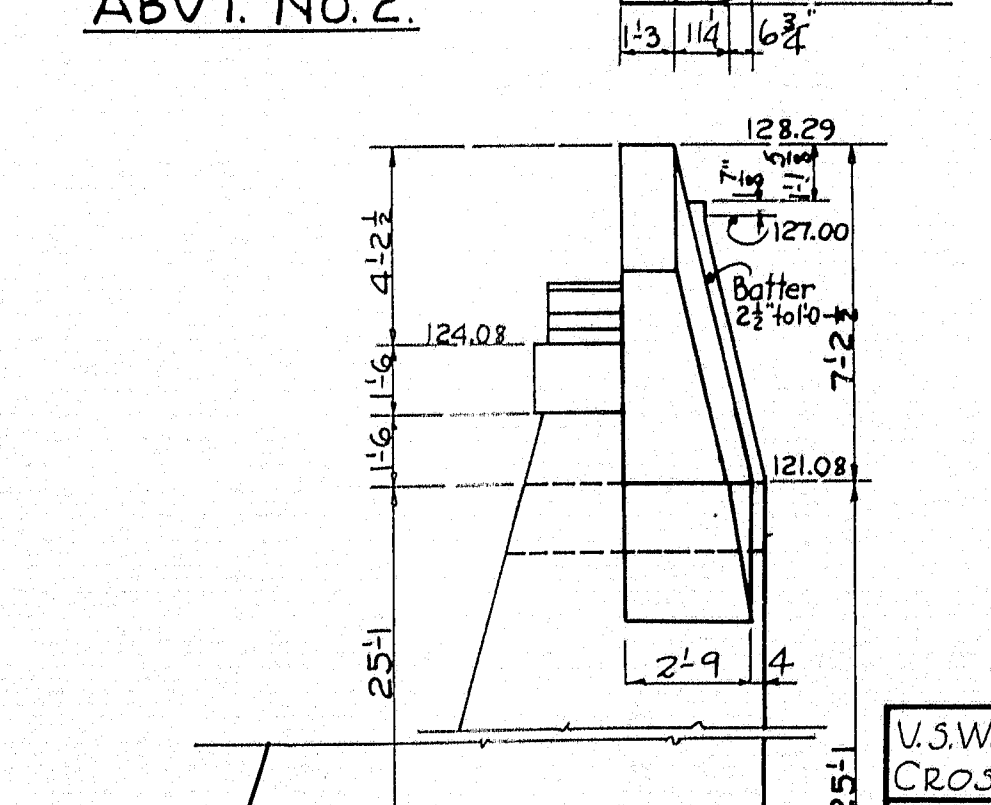
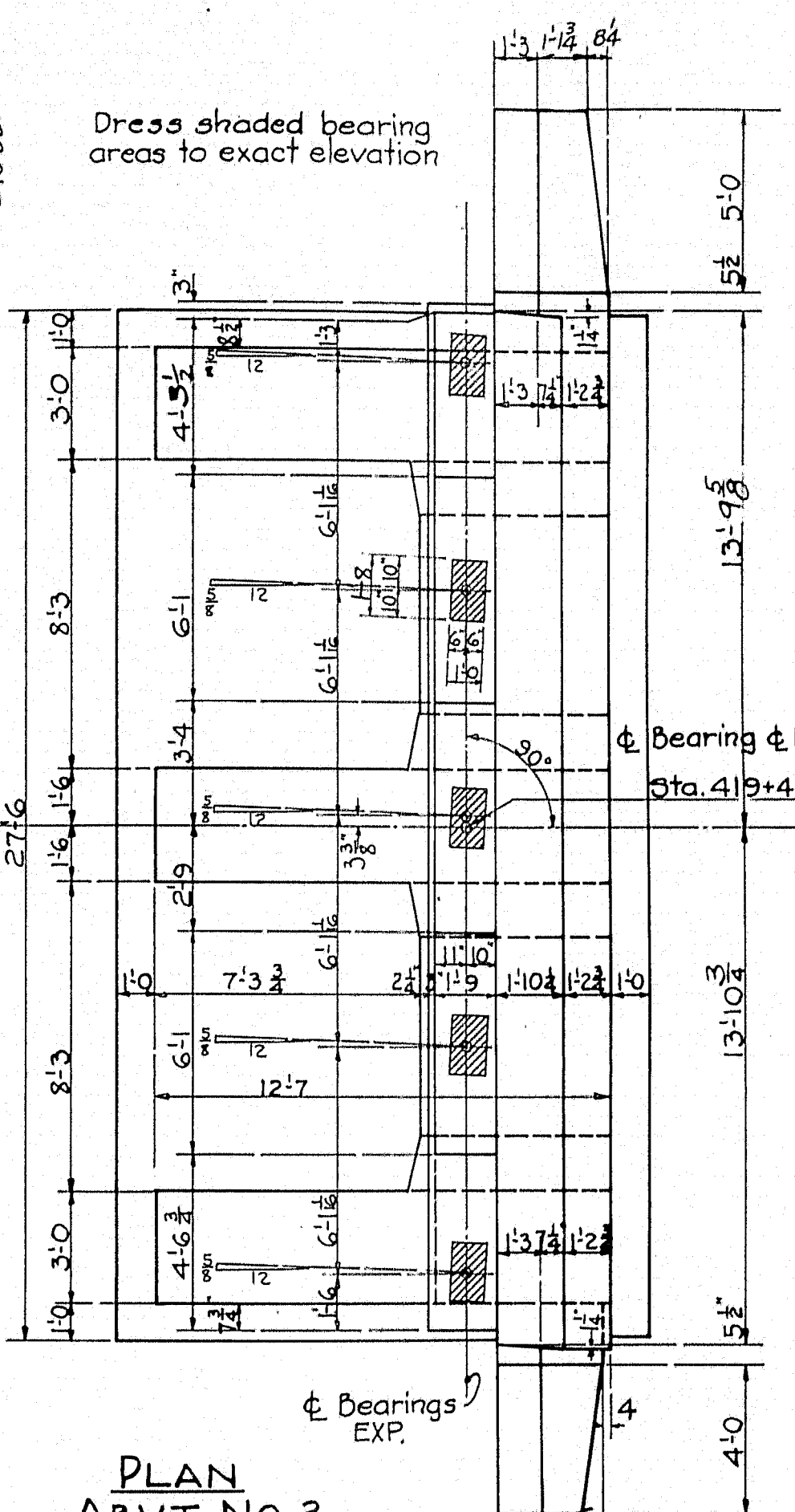
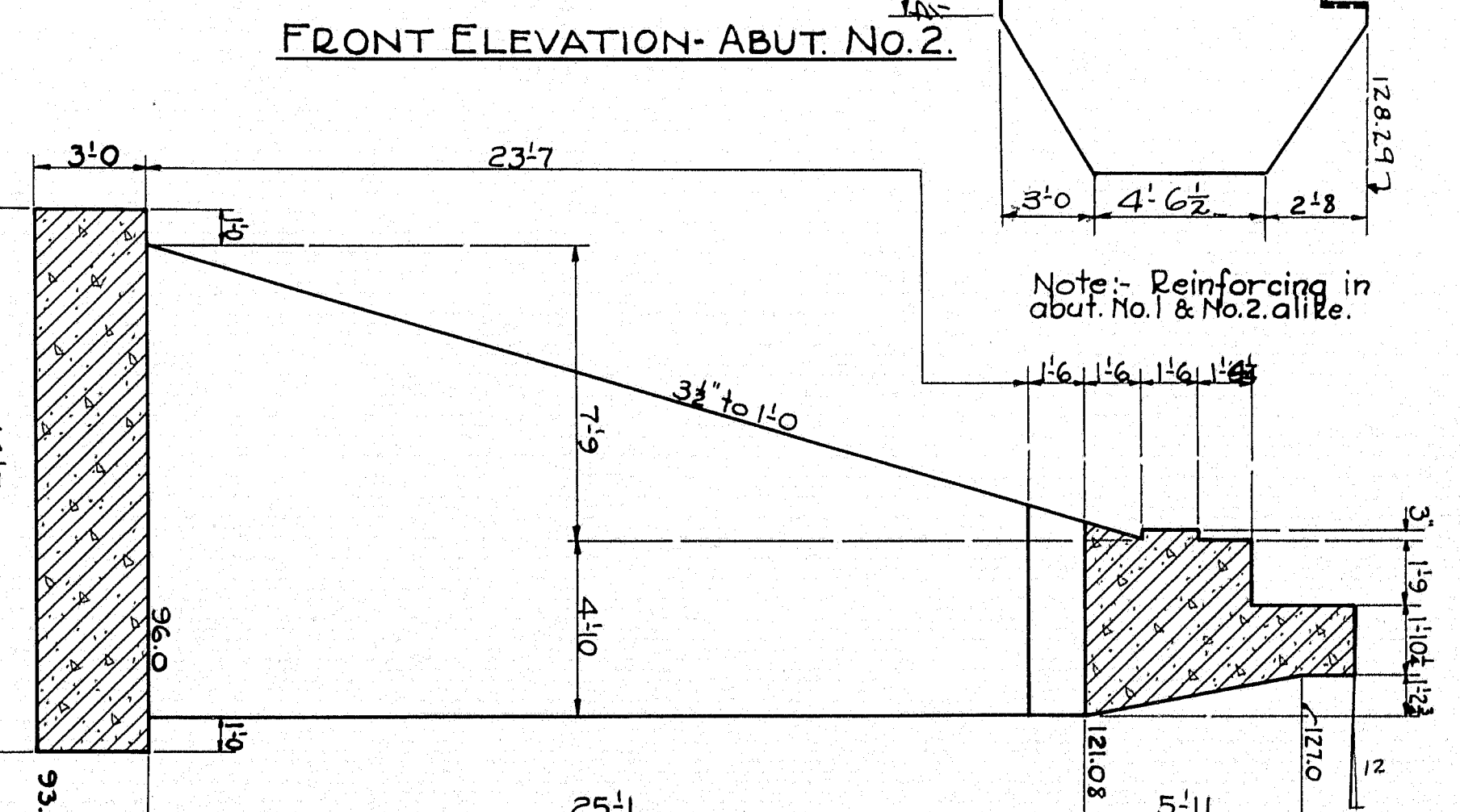
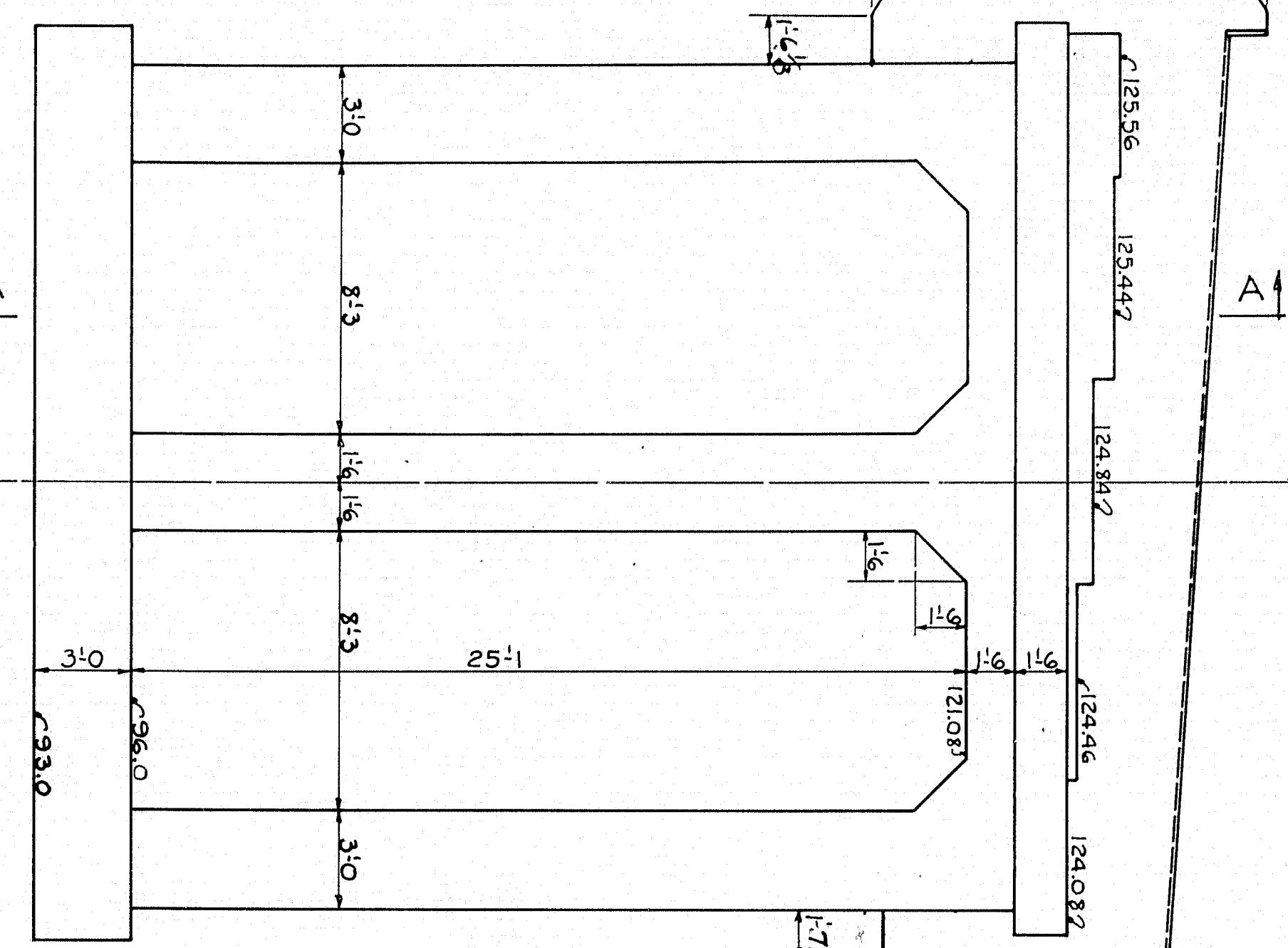
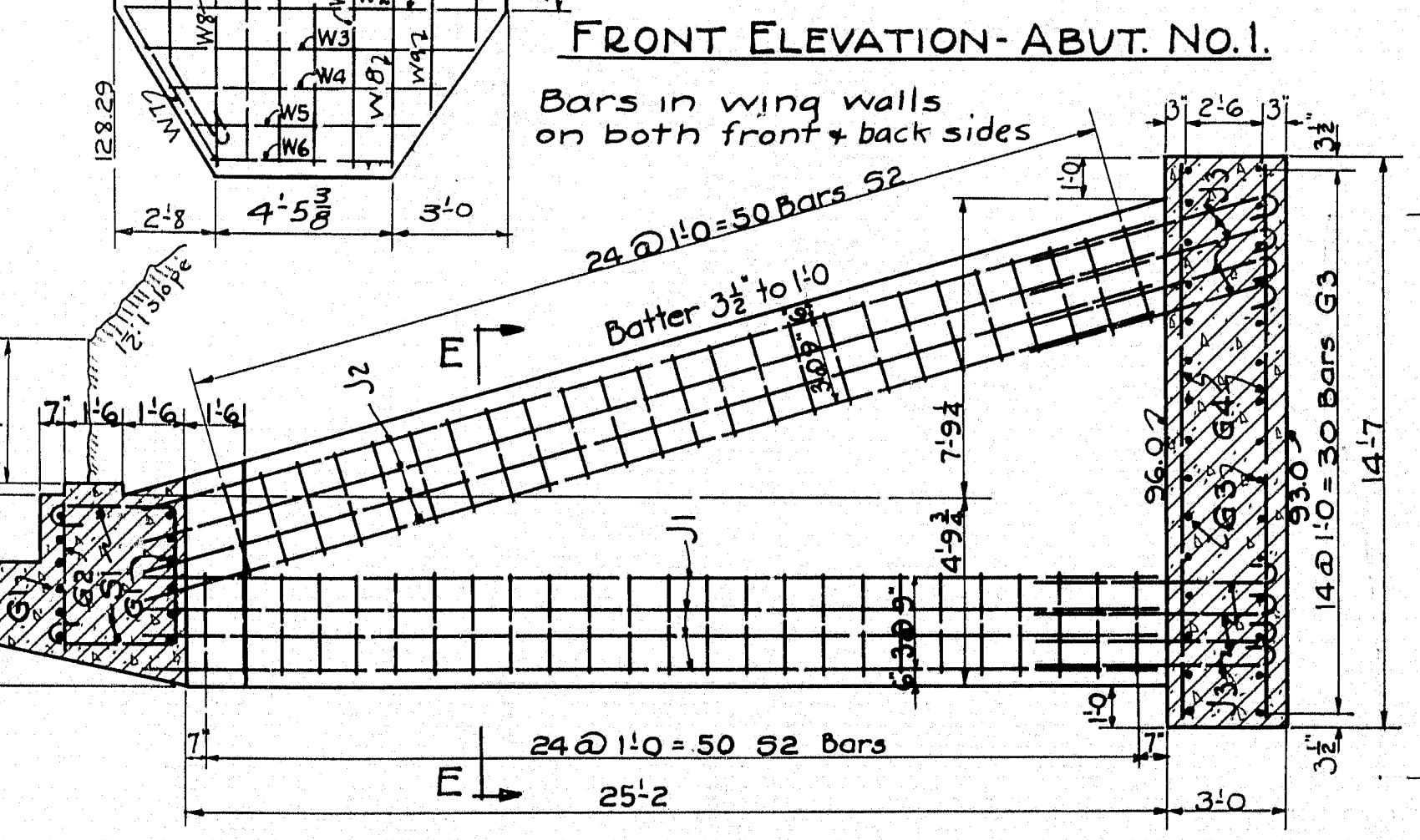
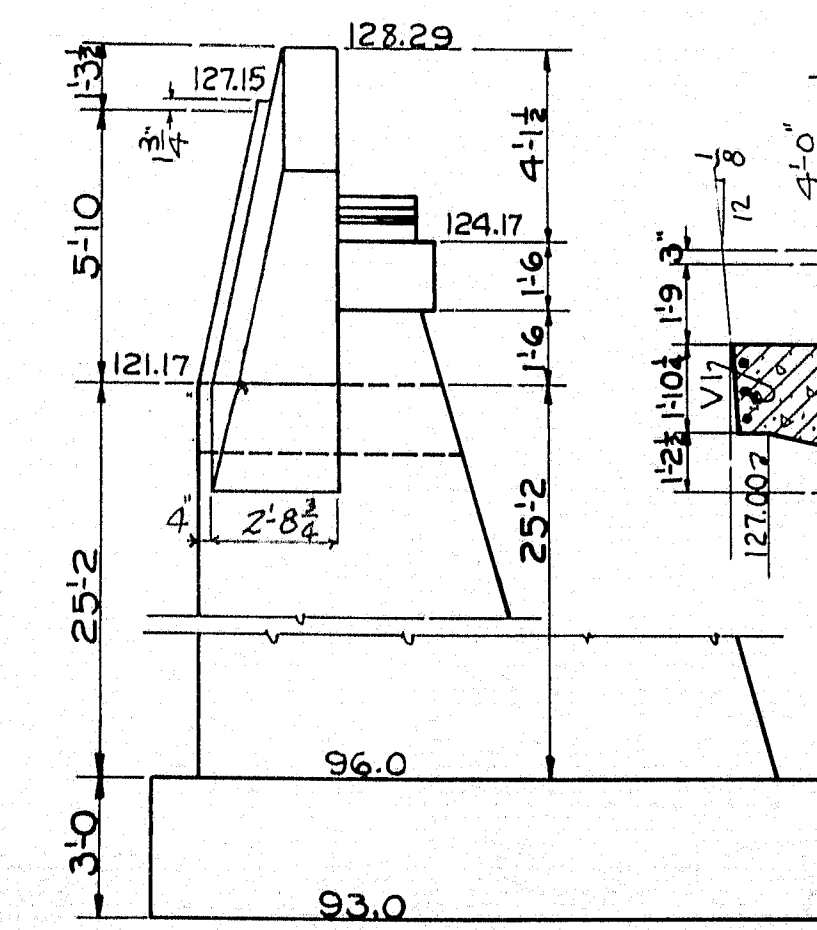
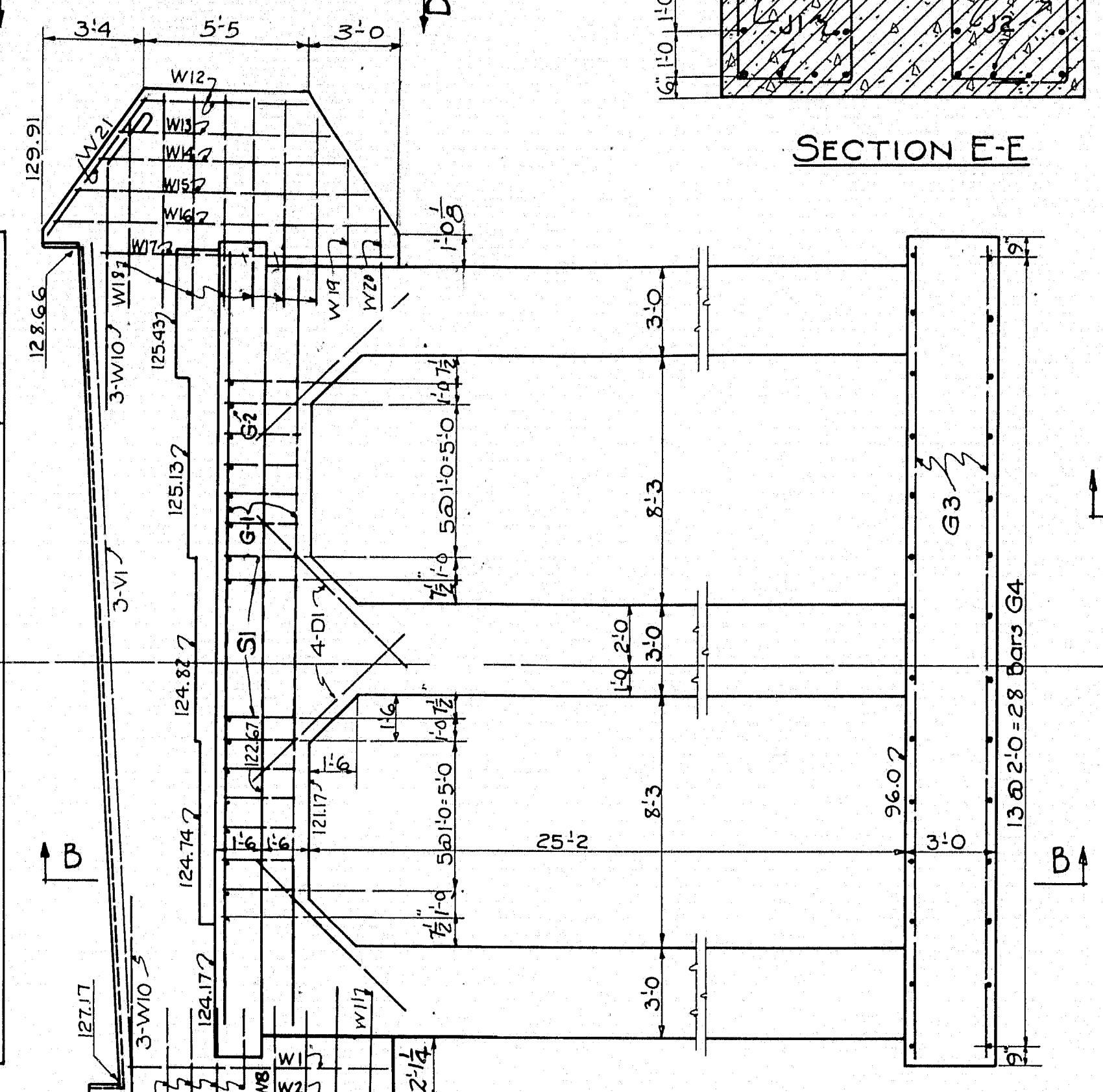
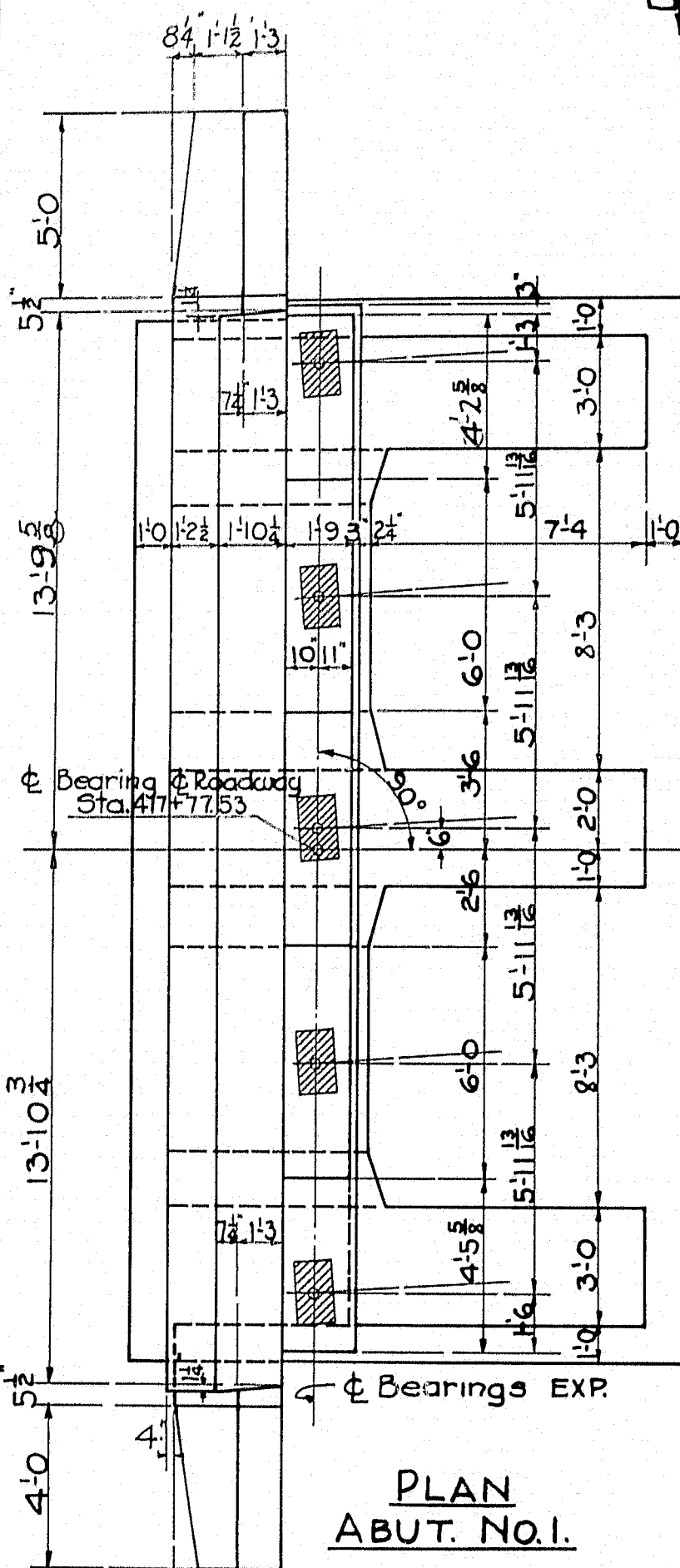
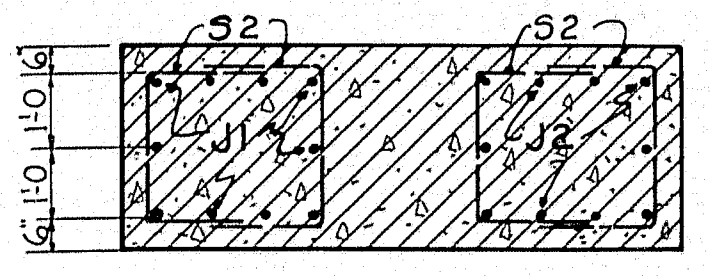
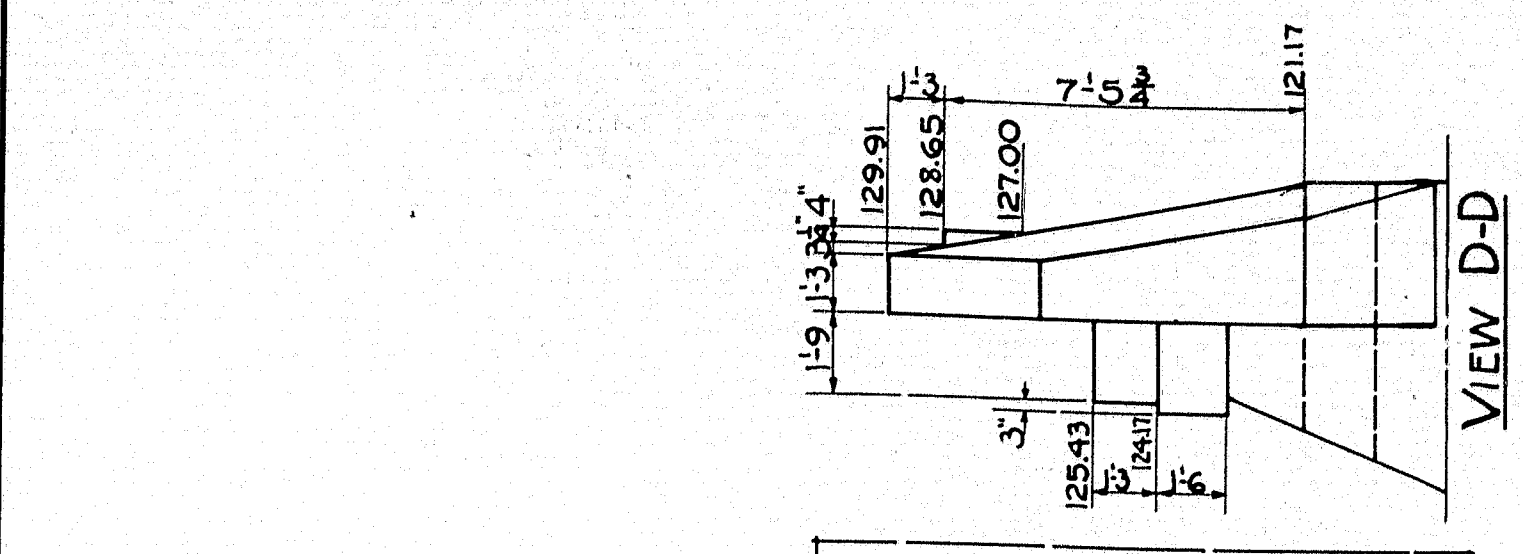
STATE HIGHWAY COMMISSION  
BRIDGE DIVISION

**RAILROAD CROSSING**  
OVER THE TRACKS OF THE  
**CANADIAN PACIFIC RAILWAY**  
IN THE TOWNSHIP OF  
**SAPLING**  
SOMERSET COUNTY  
**GENERAL PLAN**

SHEET 10 OF 20 SHEETS AUGUST 1936

28-216





Note: Cover the 1/2" slot between the curb and wings on the back side with two layers of heavy roofing felt 10' wide. Coat surface of concrete and back side of each layer as applied with hot tar or asphalt. The area to be covered with felt is to be recessed 1/4" by nailing thin strips to the forms before the concrete is placed.

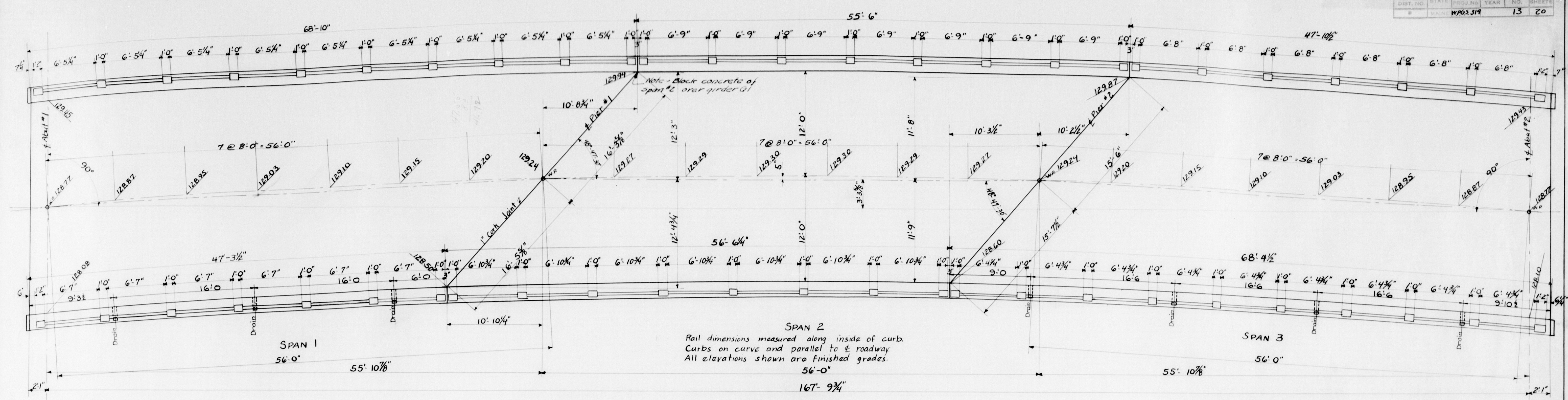
U.S. WORKS PROGRAM GRADE  
CROSSING PROJECT No. W.R.G. 319  
TOWN 13-51  
BRIDGE 3256  
STATE HIGHWAY COMMISSION  
BRIDGE DIVISION  
RAILROAD CROSSING  
OVER THE TRACKS OF THE  
CANADIAN PACIFIC RAILWAY  
IN THE TOWNSHIP OF  
SAPLING  
SOMERSET COUNTY  
ABUTMENTS  
SHEET 11 OF 20 SHEETS AUGUSTA ME. MAR. 1936

Plan by E.  
Traced by R.  
Checked by J.

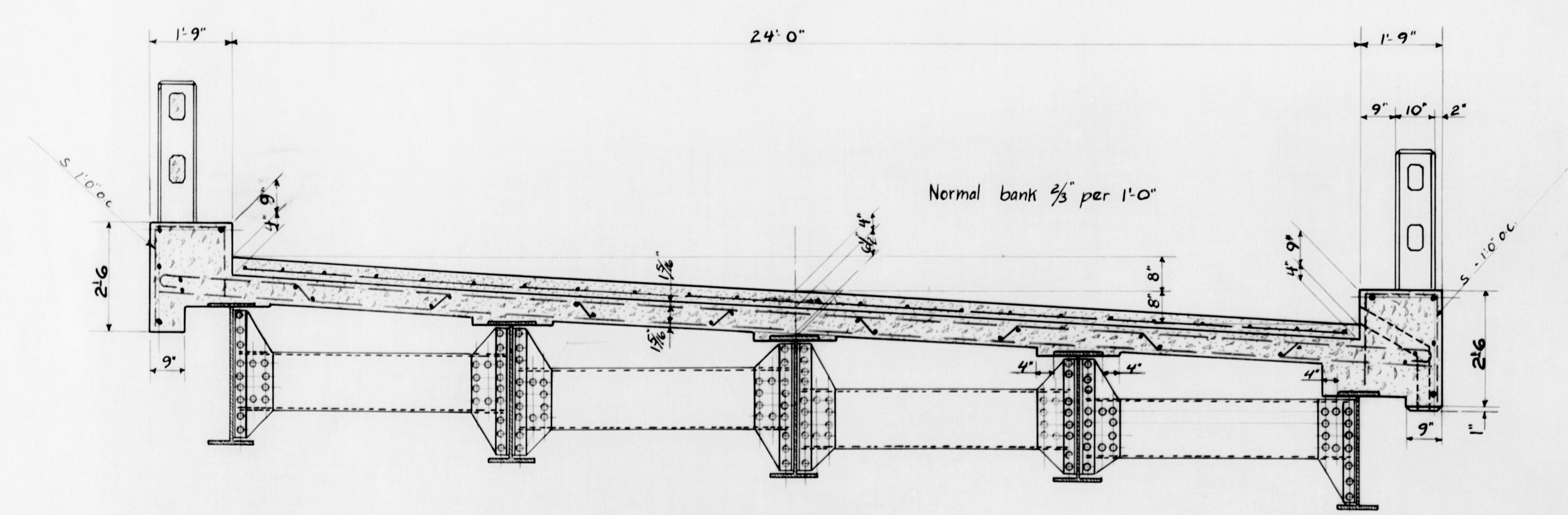






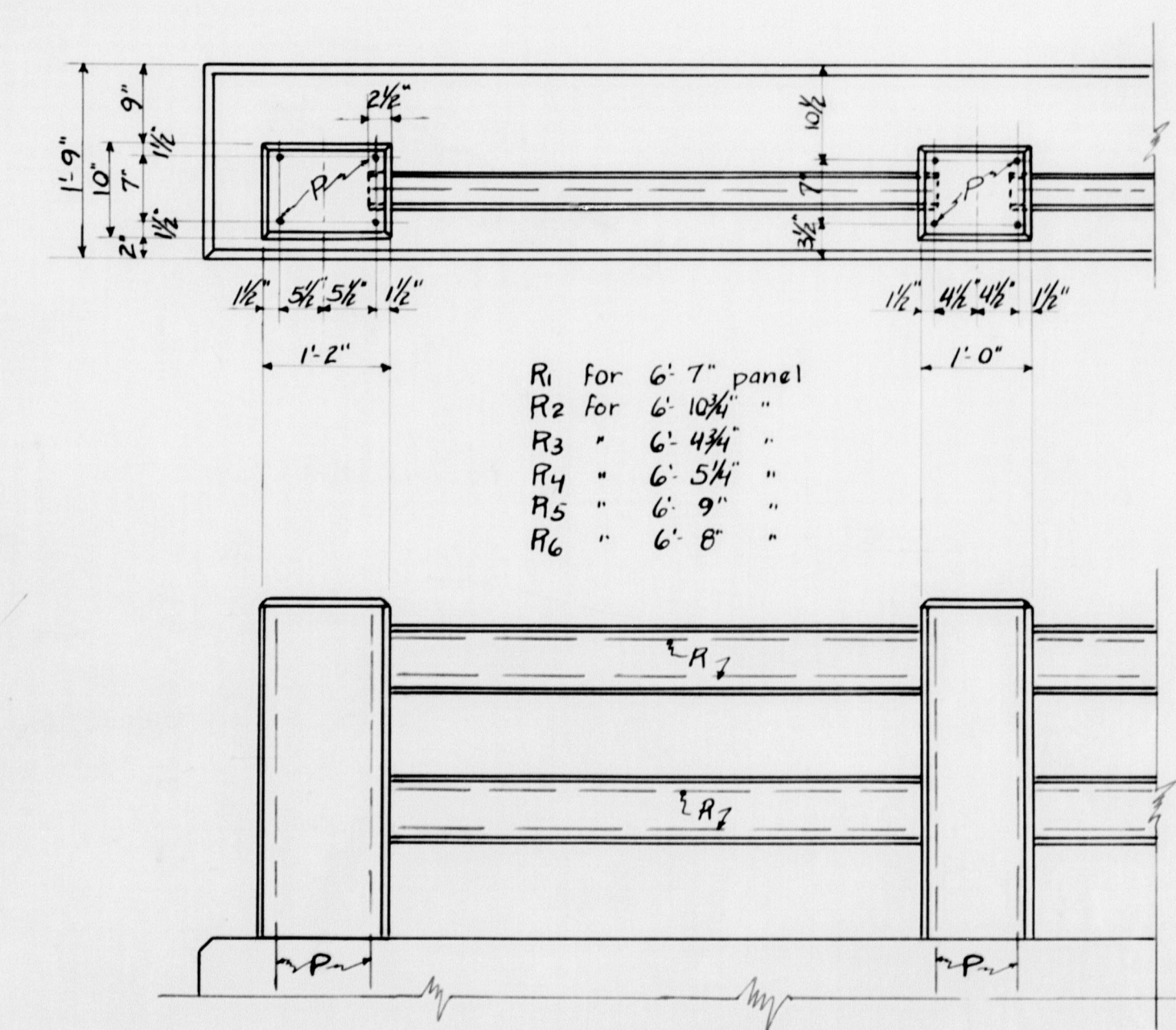
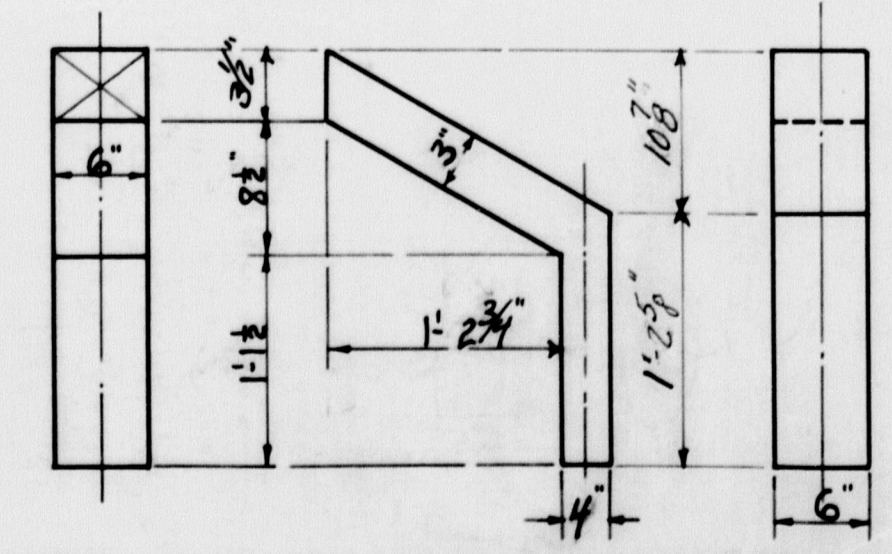


PLAN  
FINISHED GRADES + LAYOUT



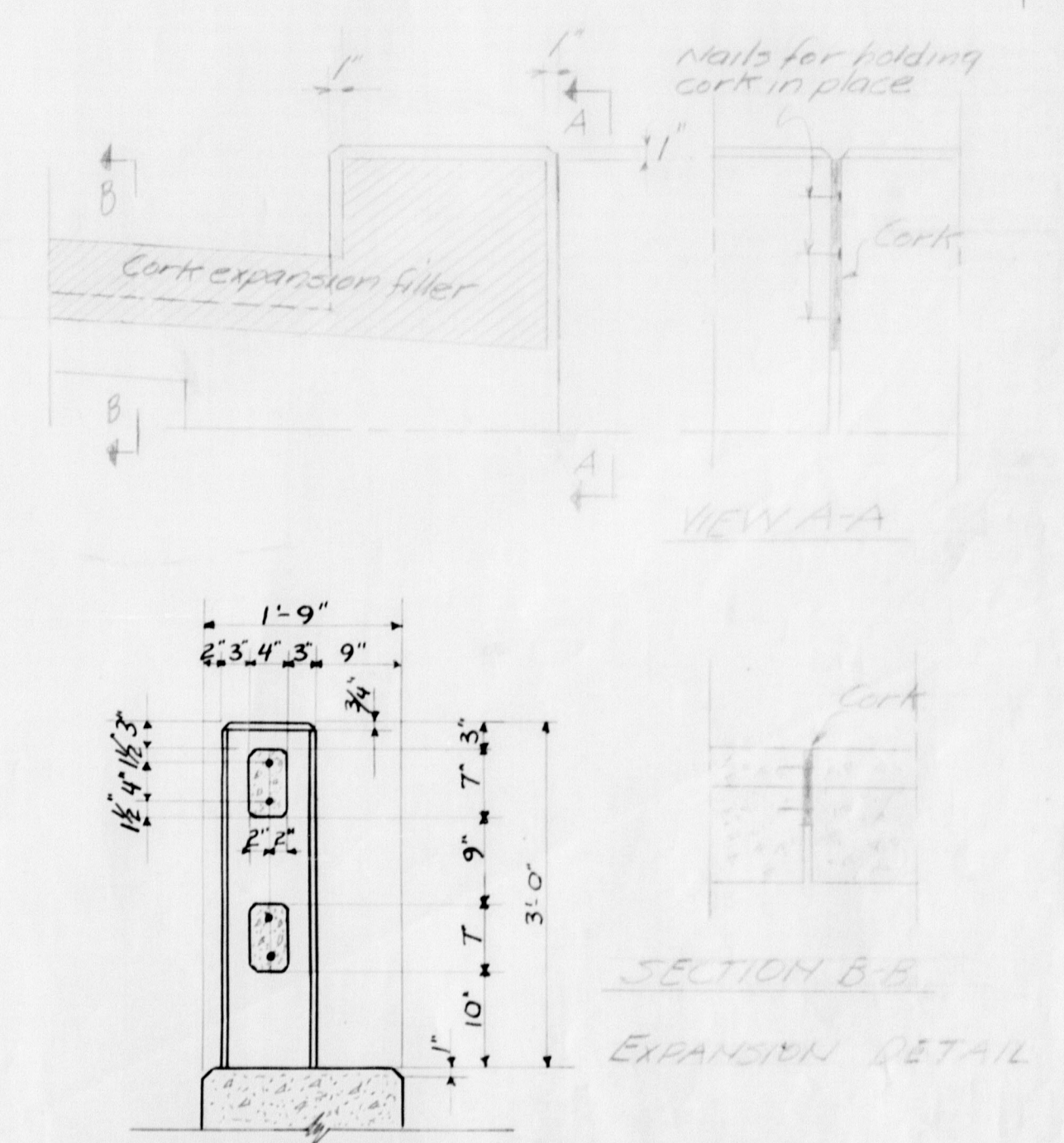
TYPICAL SECTION

DRAIN FORMS  
26 Galv. Iron  
7 Req'd.



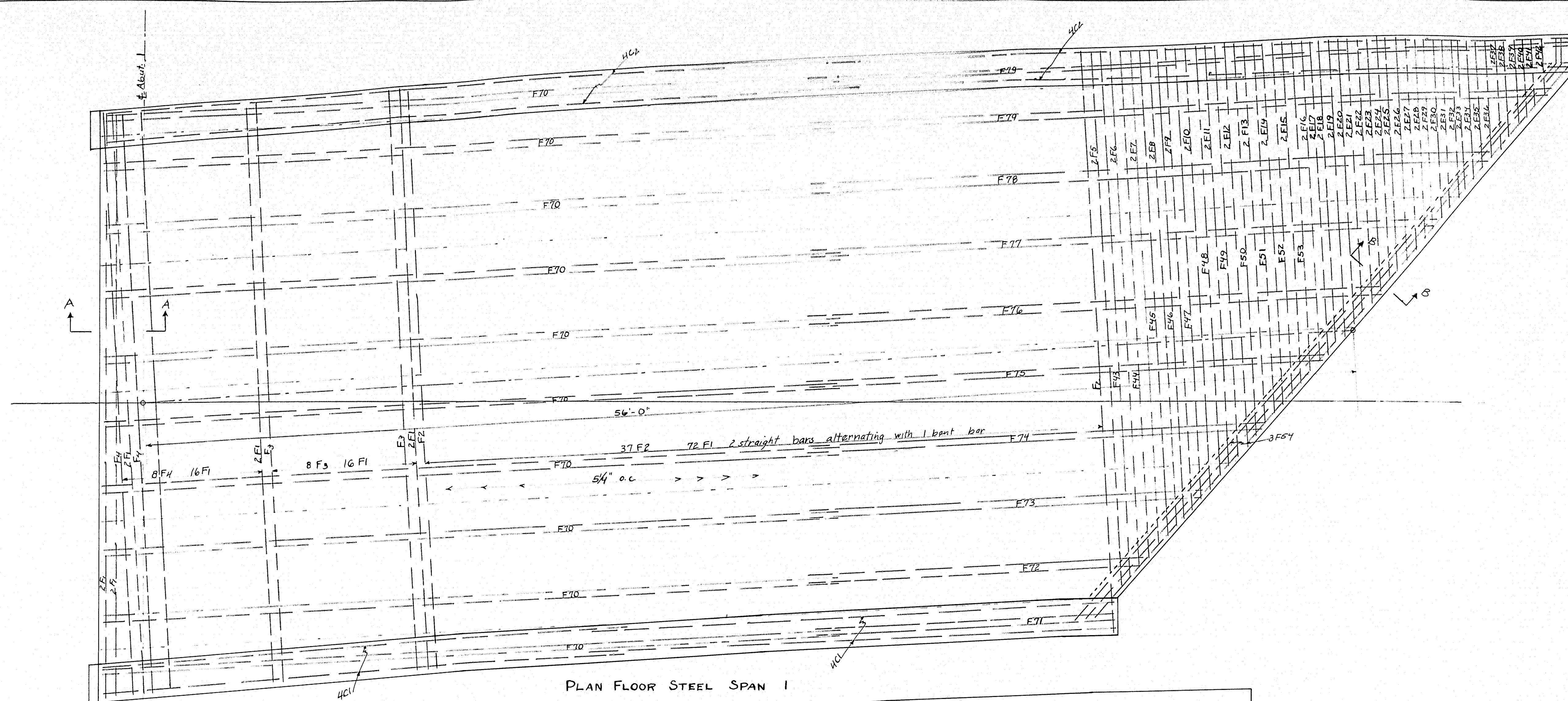
RAIL DETAILS

NOTE:- Curb and slab to be cast together. Steel for Posts to be set in curb. Precast Rail bars in lengths as shown. Place Rail bars in position with ends projecting into post forms 2". Wrap ends 6" with two inches of roofing felt. Fold in ends and when post forms are removed, cut away all roofing felt. Chamfer all exposed edges of concrete 1/2" unless otherwise indicated.

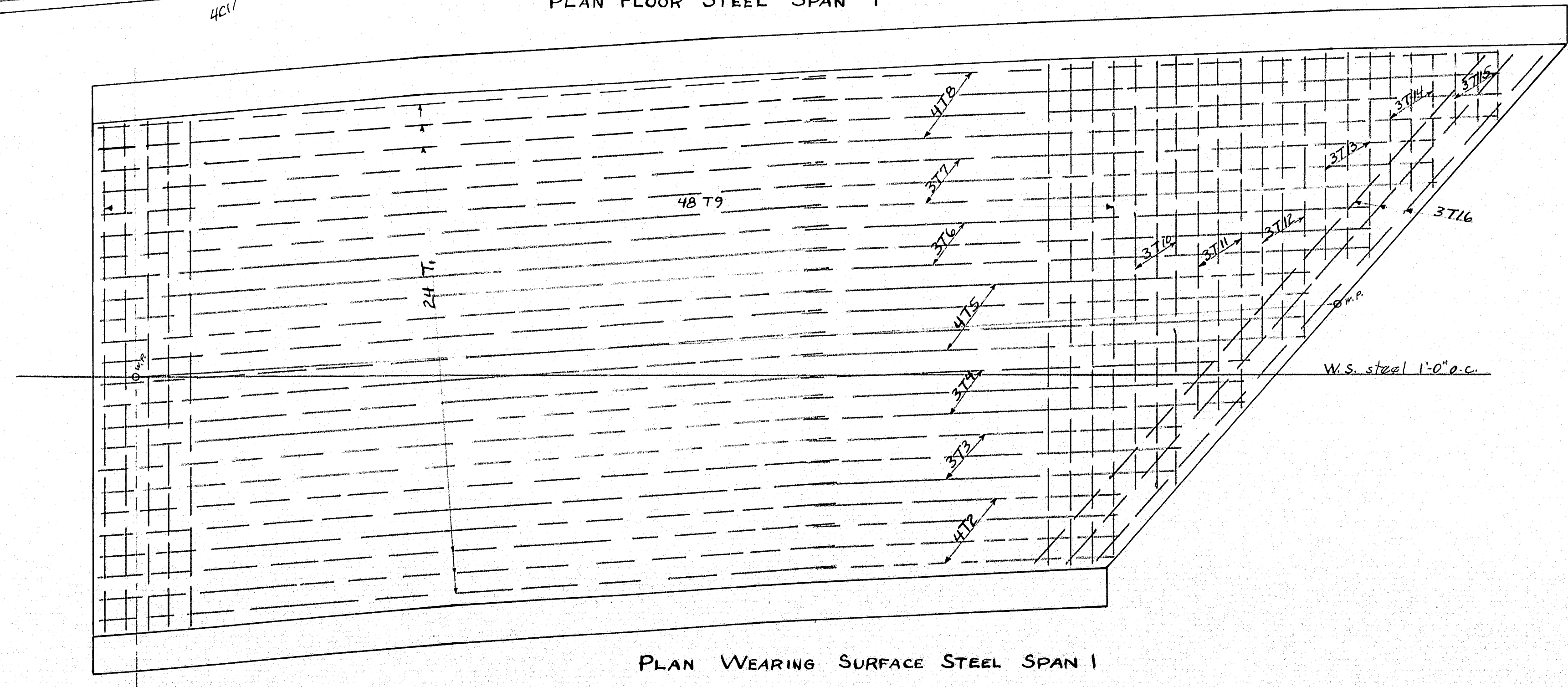


U.S. WORKS PROGRAM GRADE CROSSING PROJECT NoWPG3319 TOWN 13-51 BRIDGE 3256  
STATE HIGHWAY COMMISSION  
BRIDGE DIVISION  
RAILROAD CROSSING  
OVER THE TRACKS OF THE  
CANADIAN PACIFIC RAILWAY  
IN THE TOWNSHIP OF  
SAPLING  
SOMERSET COUNTY  
SECTION + RAIL DETAILS  
SHEET 13 OF 20 SHEETS AUGUSTAME, MAR 1936

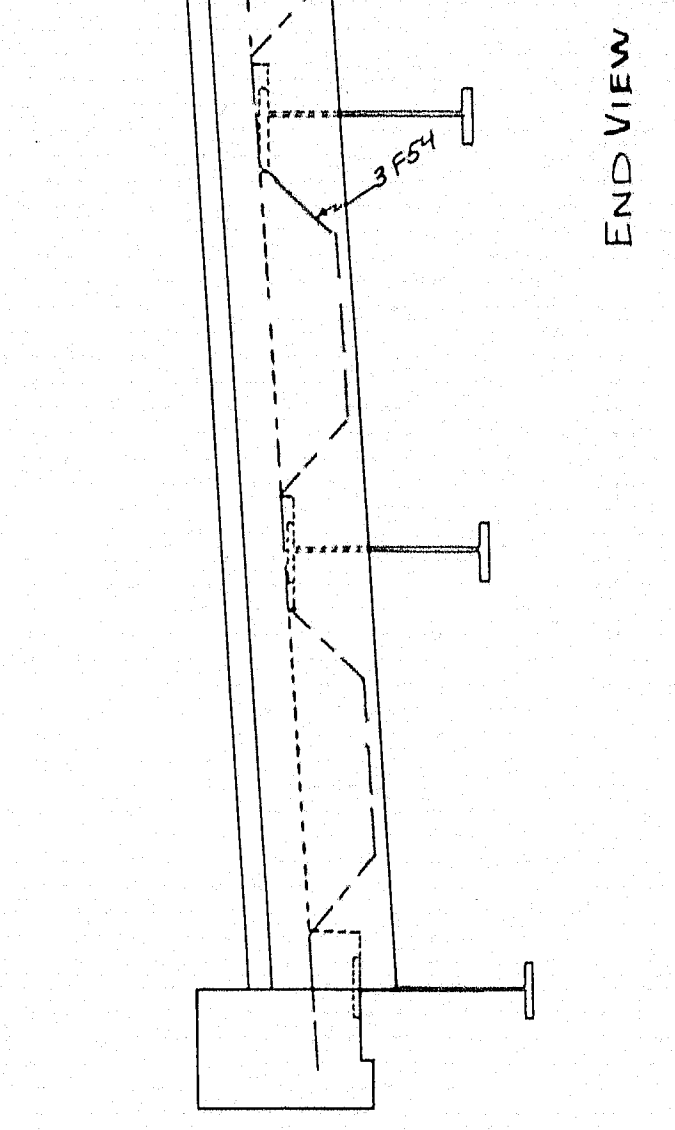




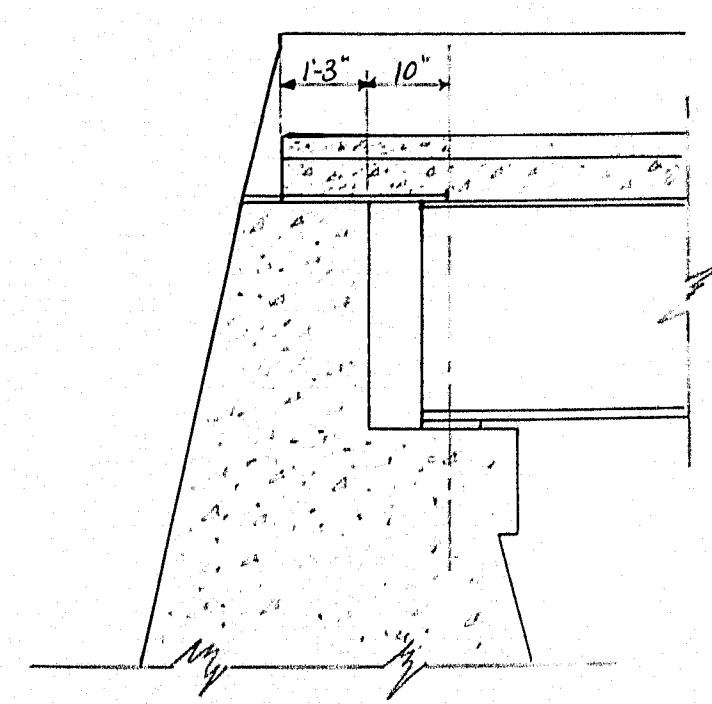
PLAN FLOOR STEEL SPAN I



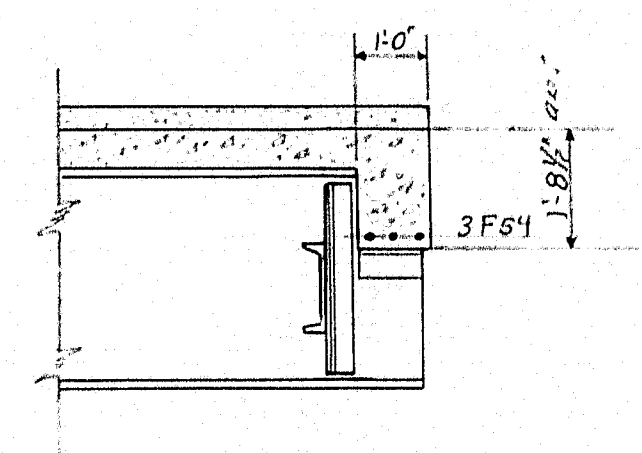
PLAN WEARING SURFACE STEEL SPAN I



END VIEW



SECTION AA

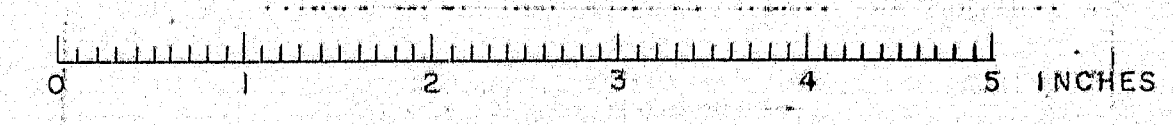


SECTION BB

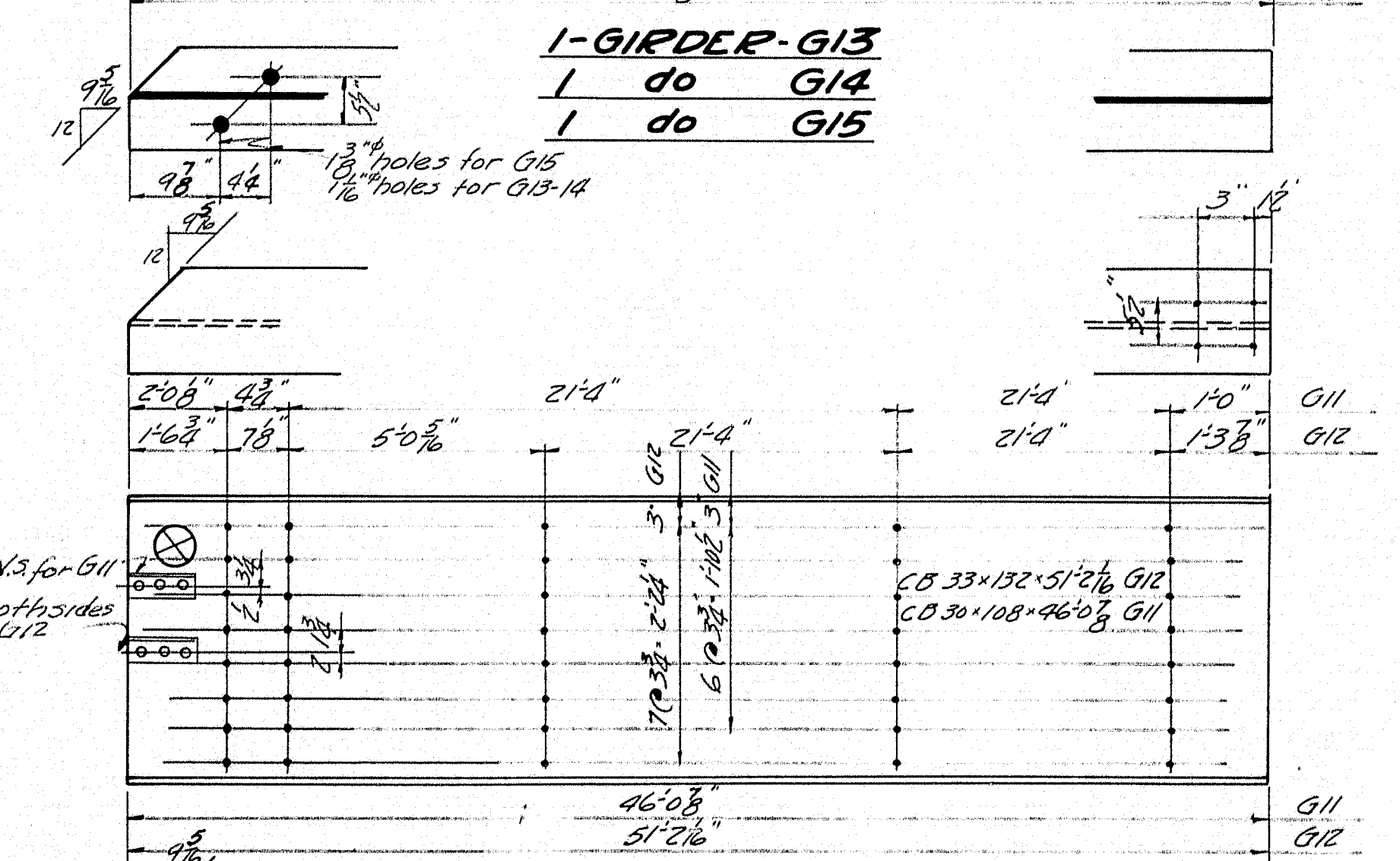
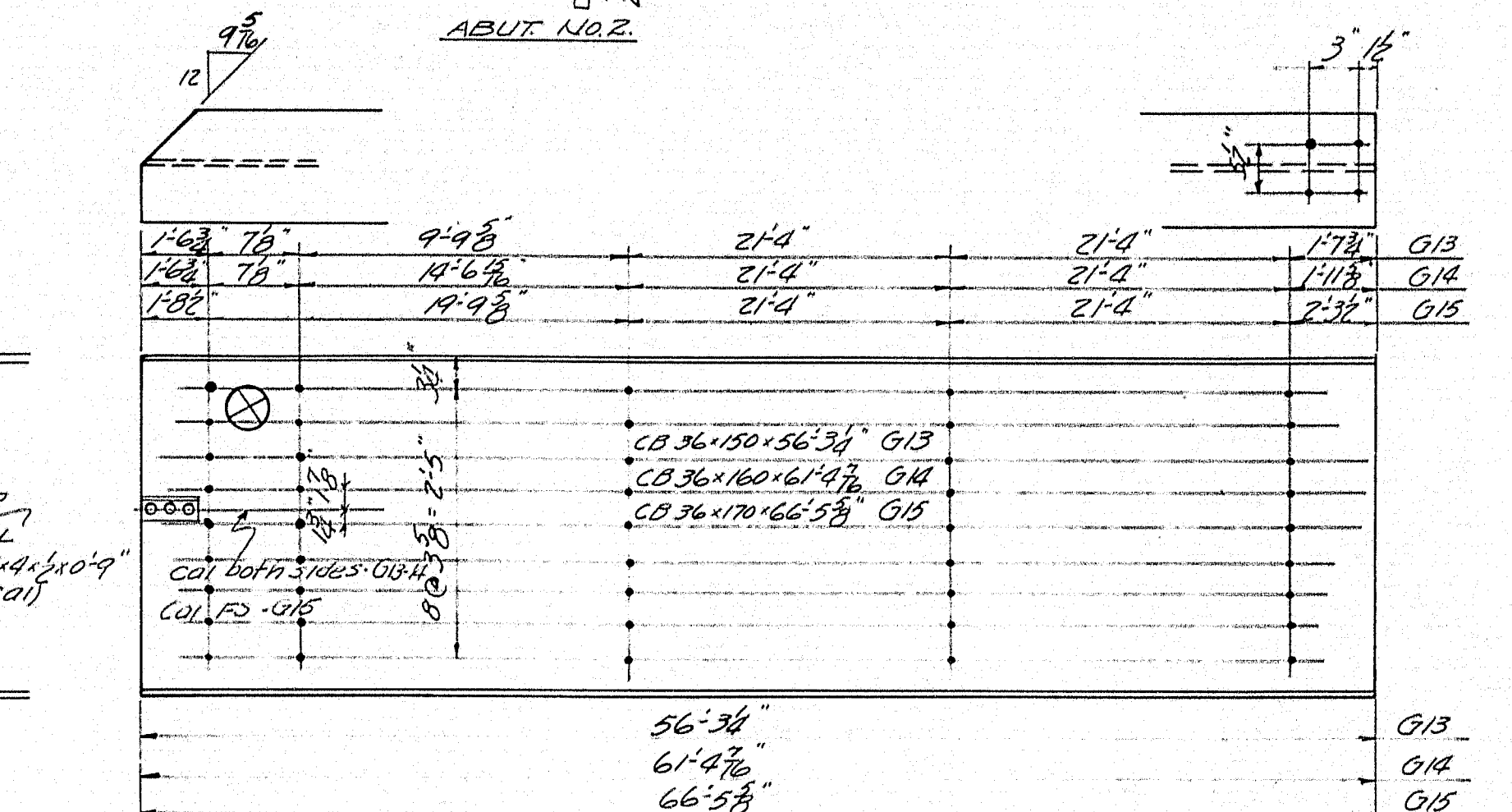
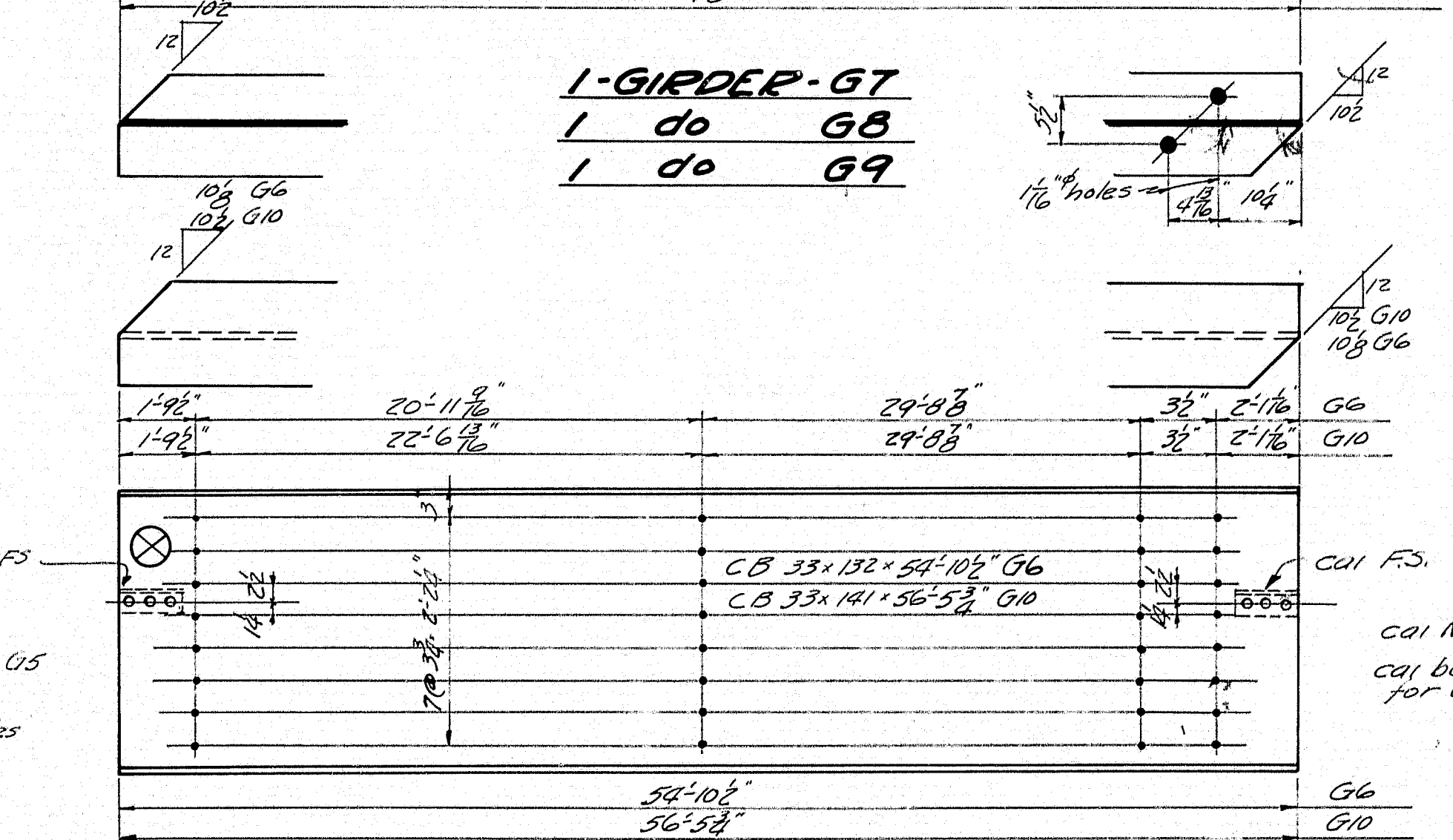
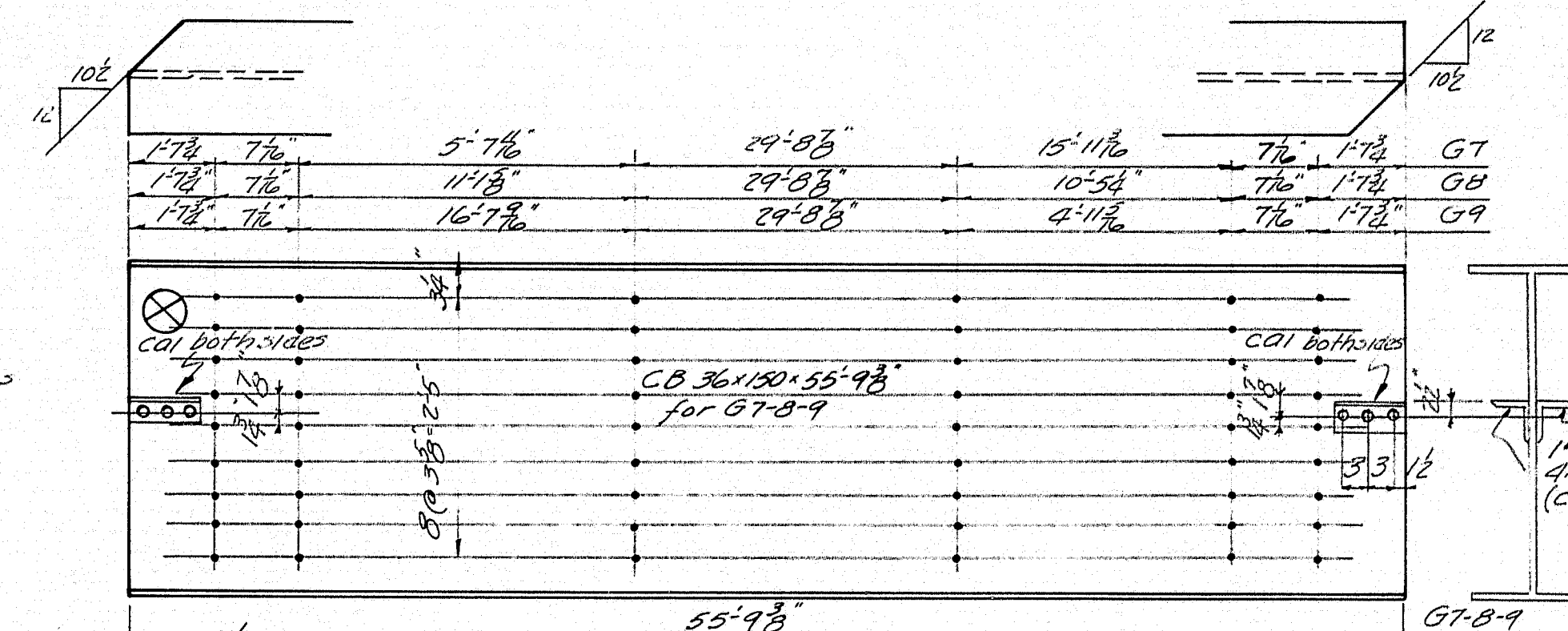
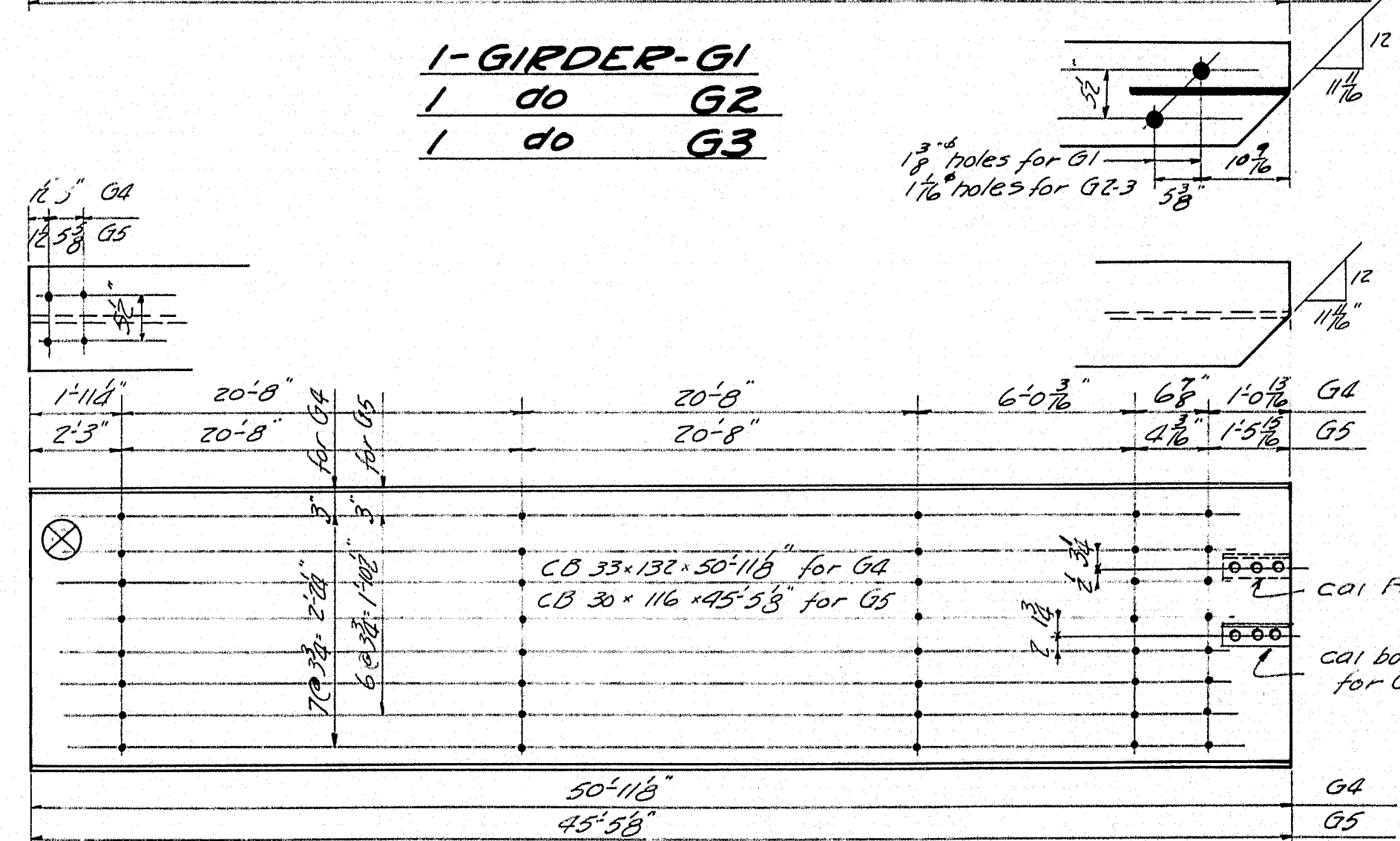
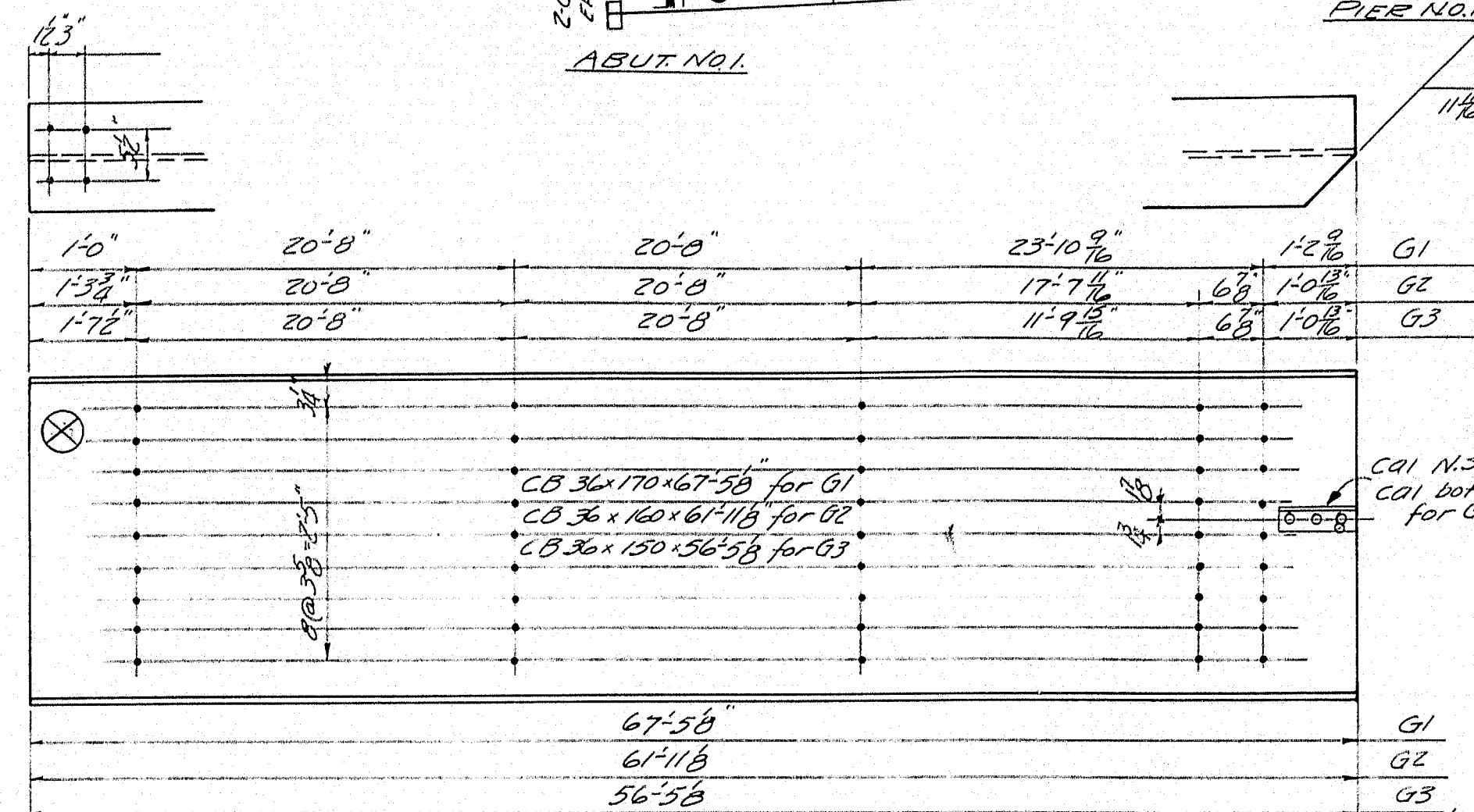
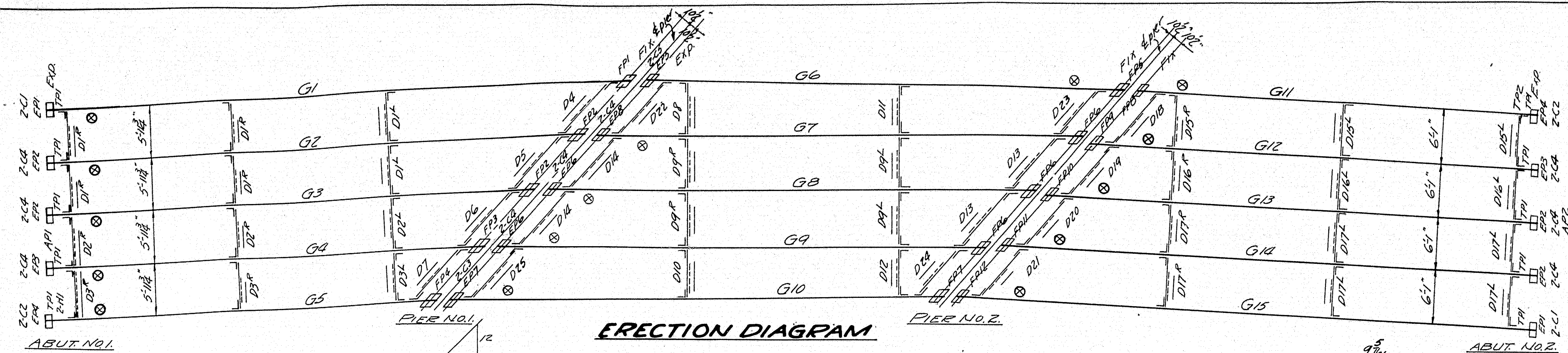
U.S. WORKS PROGRAM - GRADE CROSSING PROJECT No WPGS 319 TOWN 13-51 BRIDGE 3256

STATE HIGHWAY COMMISSION  
BRIDGE DIVISION  
RAILROAD CROSSING  
OVER THE TRACKS OF THE  
CANADIAN PACIFIC RAILWAY  
IN THE TOWNSHIP OF  
SAPLING  
SOMERSET COUNTY  
FLOOR PLAN SPAN I

SHEET 14 OF 20 SHEETS AUGUSTA, ME. MAR 1936







Other sections of equal strength may be substituted for those shown but no payment will be made for additional weight caused by such substitutions. All shop work  $\frac{3}{4}$ " rivets. Open holes  $\frac{1}{2}$ " unless noted. All field connections  $\frac{3}{4}$ " bolts. Bolts & nuts U.S. Std. Specifications—Maine State Highway Commission 1936. Loading H-15.

Note—Girders G2 to G14 inclusive to have  $\frac{1}{2}$ " rolled camber. Girders G1 & G15 to have a  $\frac{1}{4}$ " rolled camber.

U.S. WORKS PROGRAM GRADE  
CROSSING PROJECT No. WPG.334  
TOWN 13-51  
BRIDGE 3256  
STATE HIGHWAY COMMISSION  
BRIDGE DIVISION  
**RAILROAD CROSSING**  
OVER THE TRACKS OF THE  
**CANADIAN PACIFIC RAILWAY**  
IN THE TOWNSHIP OF  
**SAPLING**  
SOMERSET COUNTY  
**STEEL DETAILS**  
SHEET 18 OF 20 SHEETS AUGUSTA ME. MAR. 1936

Plan by V.E.  
Checked by—M.M.